

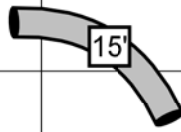
VIP Dog Sports UKI
 Judge: Karen Albert
 April 18, 2026

Combined Gamblers

Dogwalk & Weave Poles = 5 pts
 AFrame = 4 pts
 Teeter = 3 pts
 Tunnels = 2 pts
 Jumps = 1 pt

-20 -10 0 10 20 30 40

.....



10

20

30

40

50

60

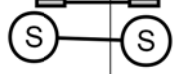
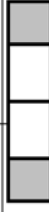
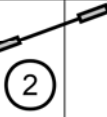
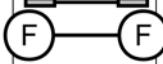
70

80

90

100

Opening: 30 seconds
 Closing: 24-20-20s-16s = 16 seconds
 16-12-12s-8-8s-4s = 17 seconds
 10 pts: Numbered gamble; cross the gamble line
 15 pts: Numbered gamble; do not cross the gamble line
 NO back-to-back contacts
 NO back-to-back gamble obstacles
 OK to cross where line ends after #4

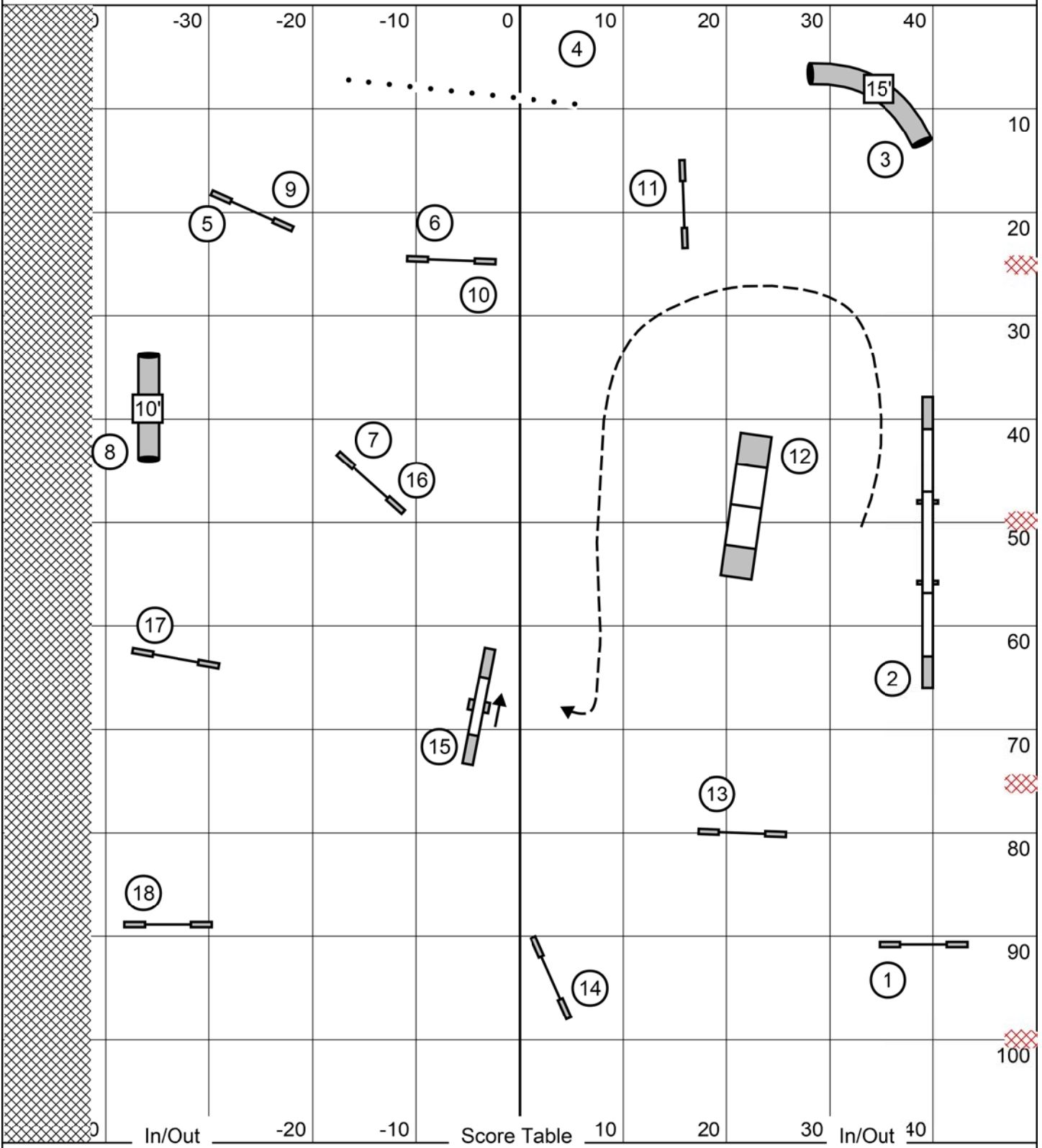


0 In/Out -20 -10 Score Table 10 20 30 In/Out 40

Map is an approximation

VIP Dog Sports UKI
Judge: Karen Albert
April 18, 2026

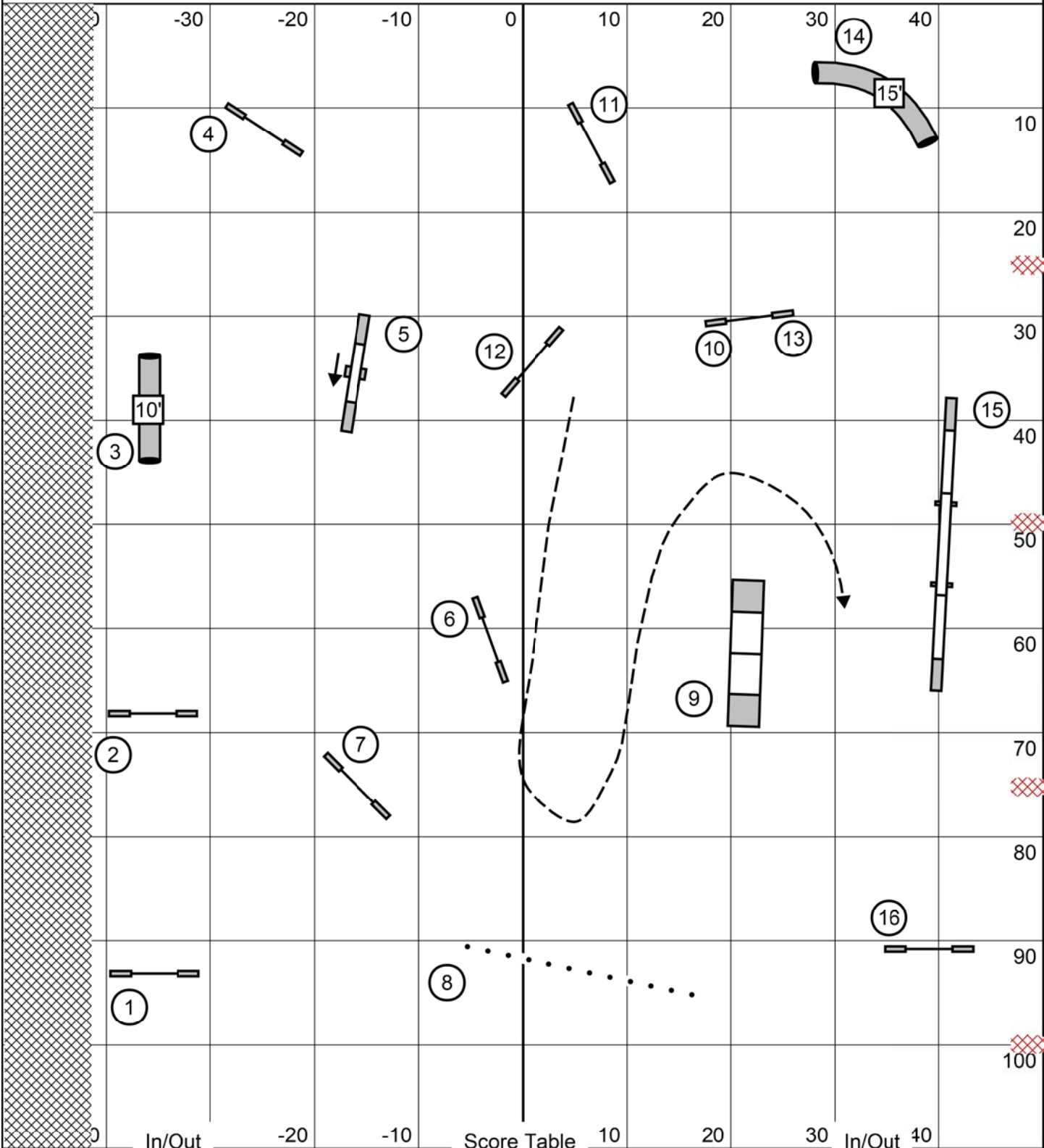
Senior/Champ Agility



Map is an approximation

VIP Dog Sports UKI
 Judge: Karen Albert
 April 18, 2026

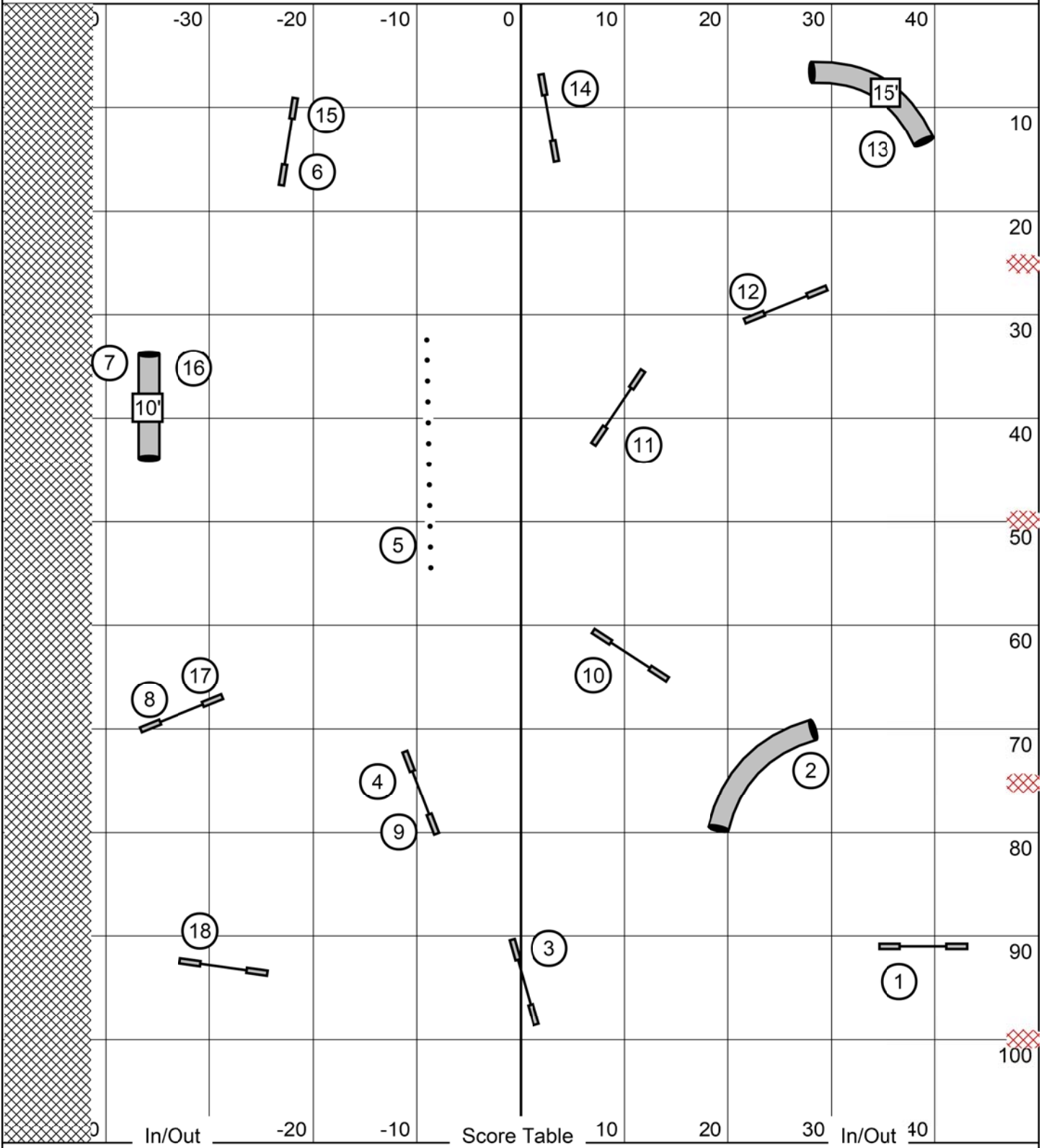
Beginner/Novice Agility



Map is an approximation

VIP Dog Sports UKI
 Judge: Karen Albert
 April 18, 2026

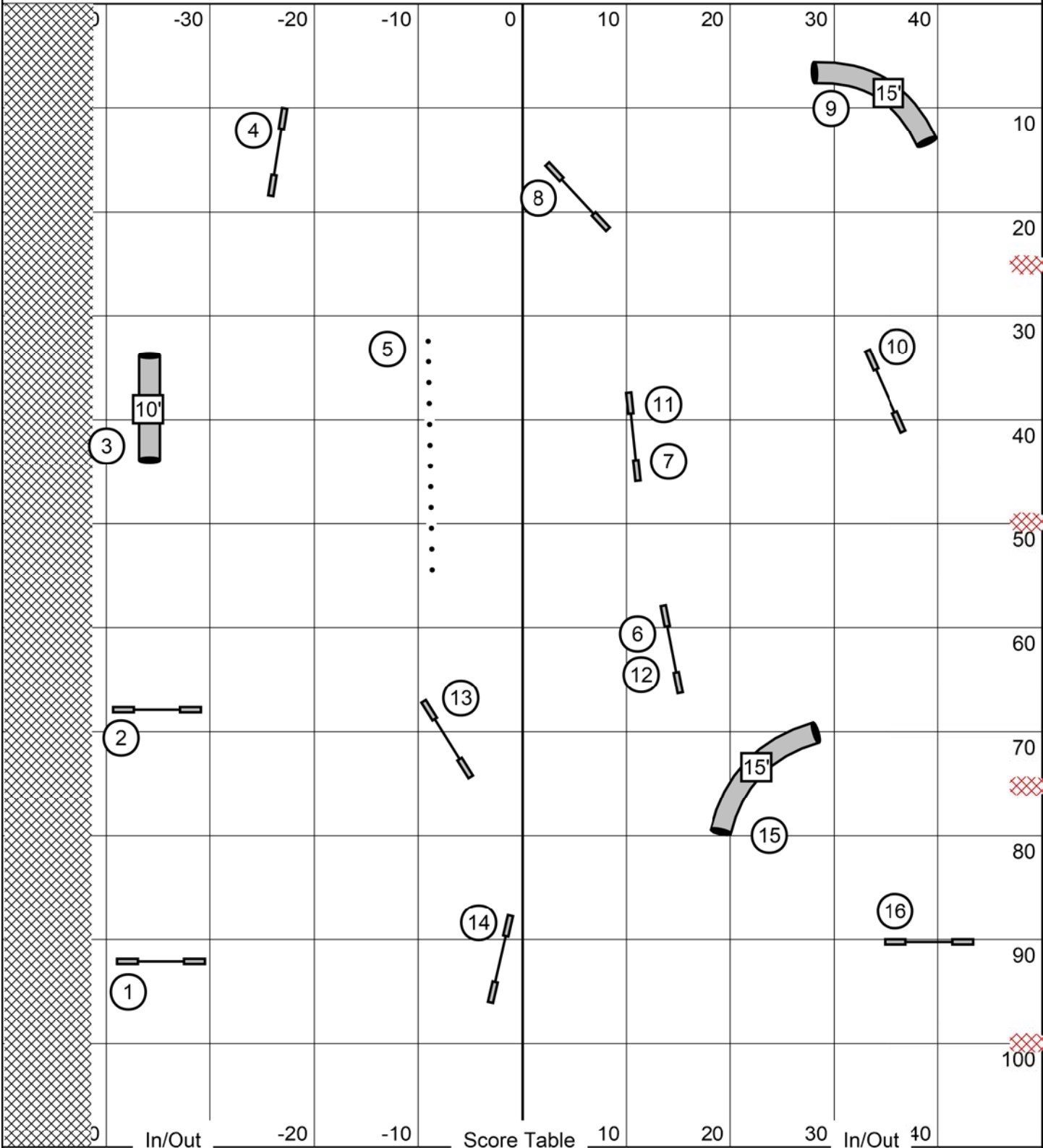
Senior/Champ Jumping 1



Map is an approximation

VIP Dog Sports UKI
 Judge: Karen Albert
 April 18, 2026

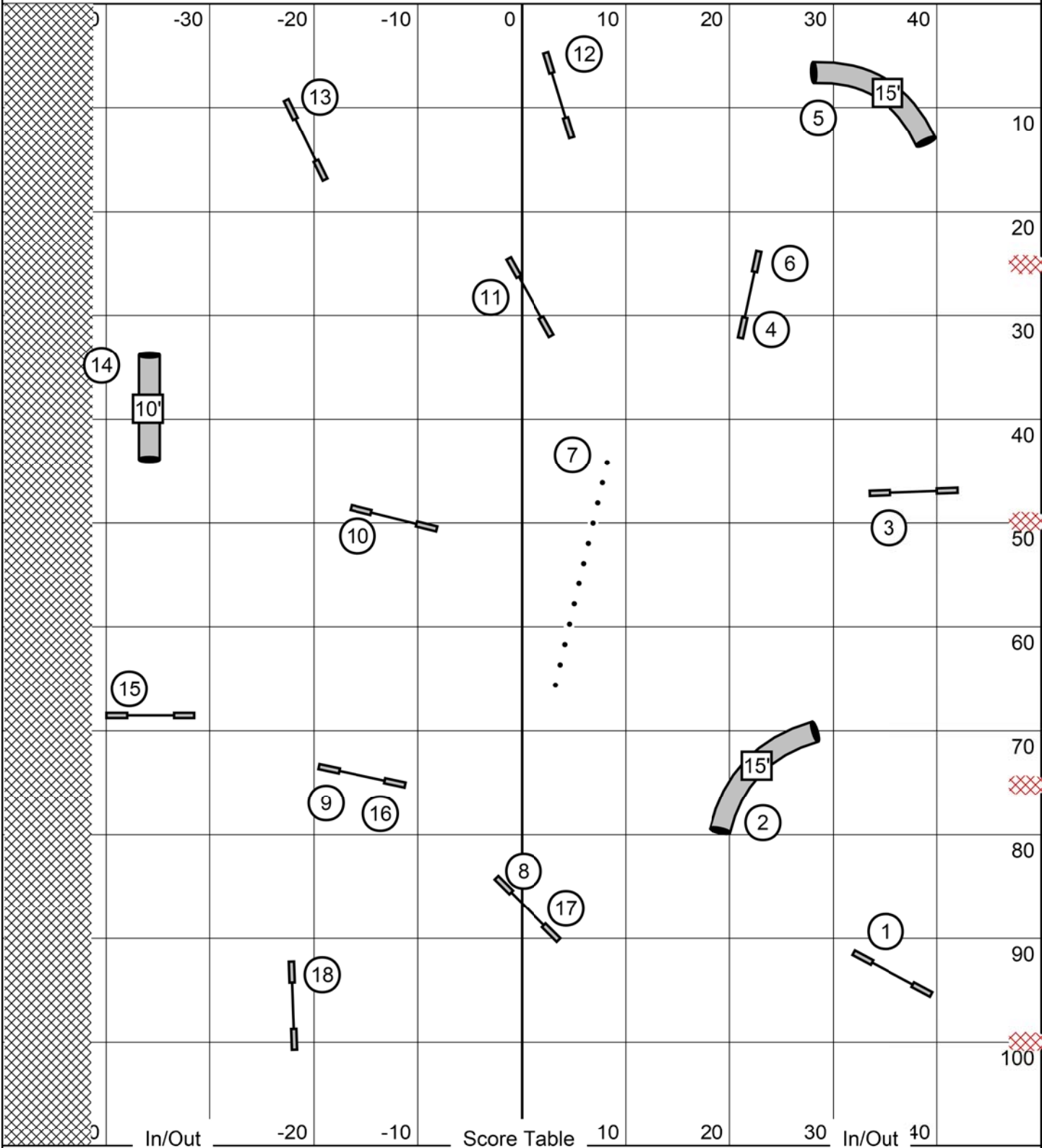
Beginner/Novice Jumping 1



Map is an approximation

VIP Dog Sports UKI
 Judge: Karen Albert
 April 18, 2026

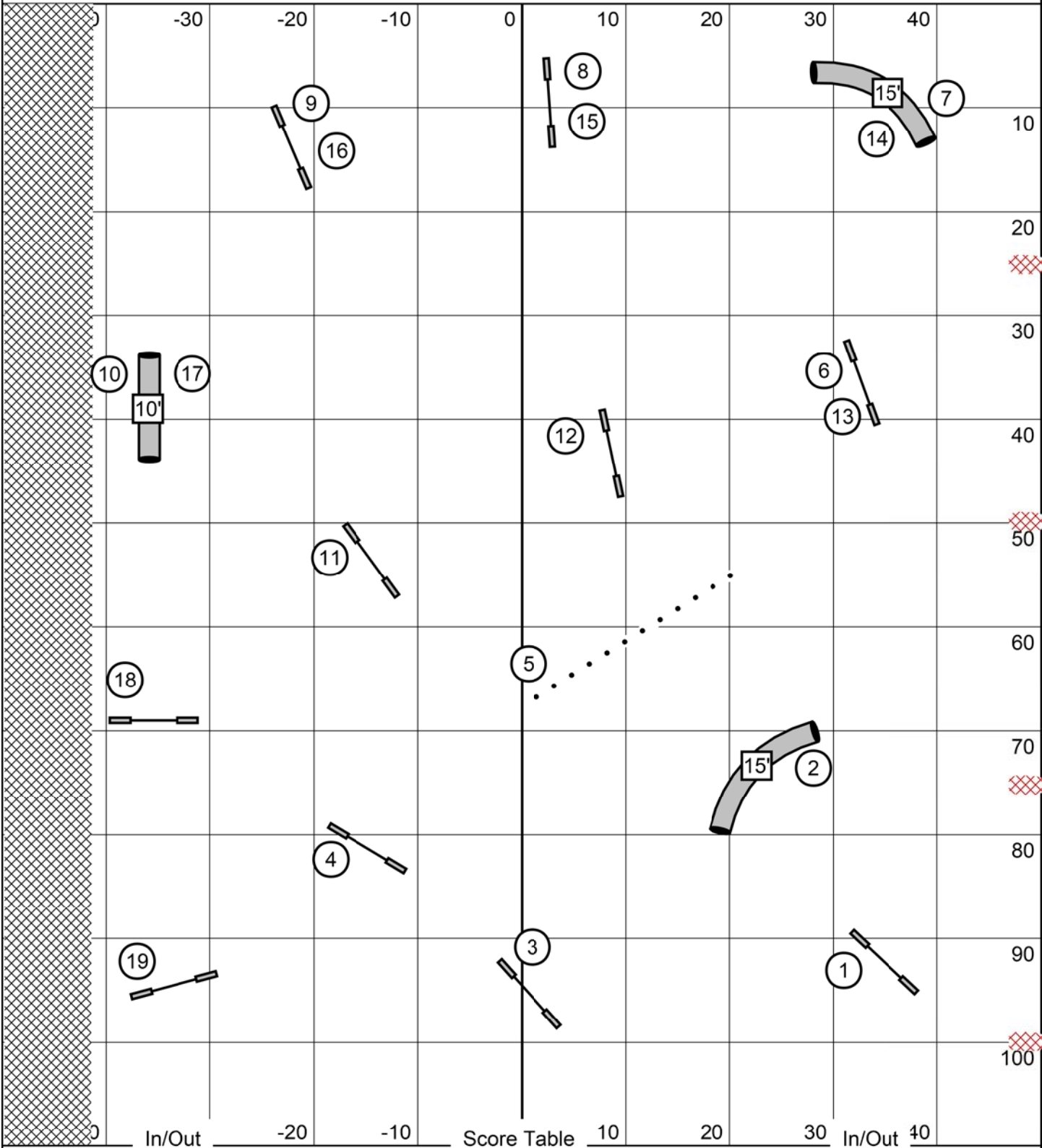
Senior/Champ Jumping 2



Map is an approximation

VIP Dog Sports UKI
 Judge: Karen Albert
 April 18, 2026

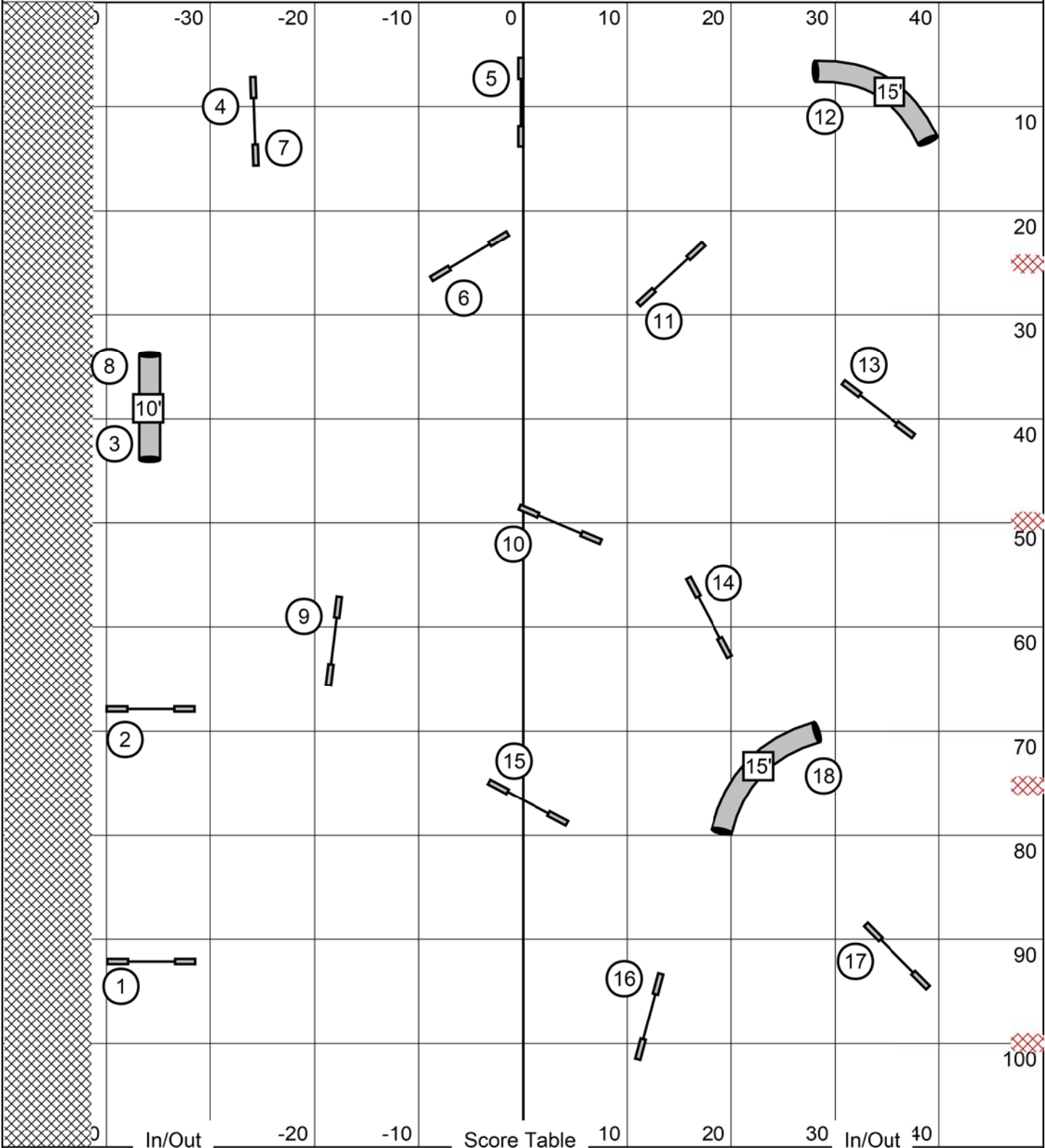
Beginner/Novice Jumping 2



Map is an approximation

VIP Dog Sports UKI
Judge: Karen Albert
April 18, 2026

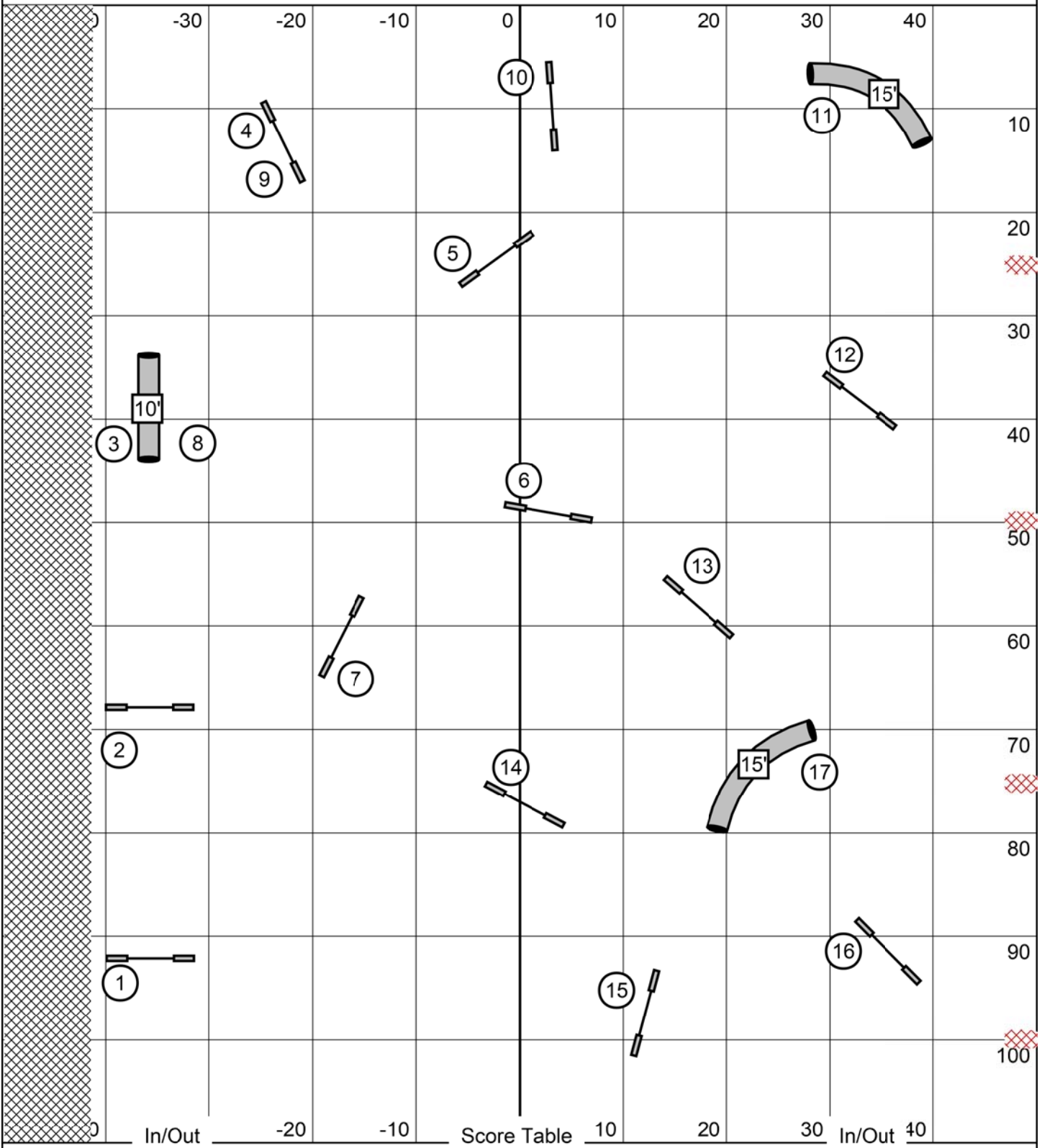
Senior/Champ Speedstakes



Map is an approximation

VIP Dog Sports UKI
 Judge: Karen Albert
 April 18, 2026

Beginner/Novice Speedstakes



Map is an approximation